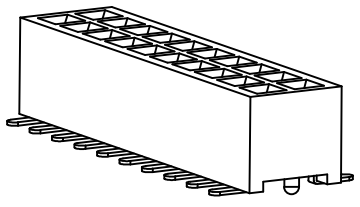


REV	LOCATIONS	DESCRIPTION	DATE	REVISER	APPD

**SPECIFICATIONS**

**Electrical**  
 Current Rating: 2A AC(rms)/DC  
 Voltage Rating: 250V AC(rms)/DC  
 Contact Resistance: 20 mΩ Max  
 Insulation Resistance: 1000 MΩ MIN  
 Withstanding Voltage: 500V AC r.m.s  
 Temperature Range—Operating: -40°C~+85°C

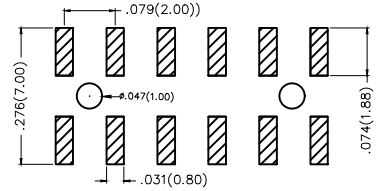
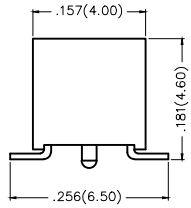
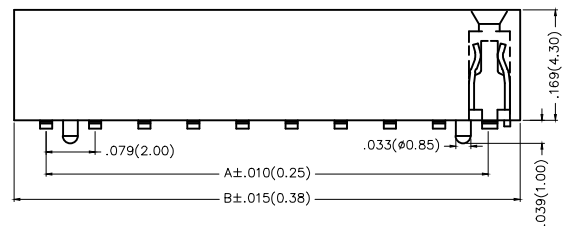
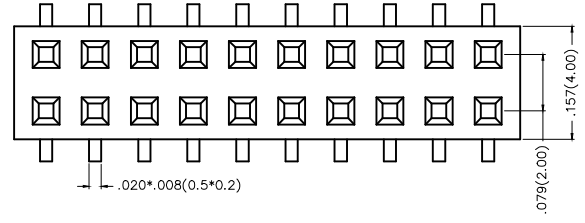
**Material and Plating**  
 Housing: Glass Filled Polyester( UL 94V-0)  
 Pin: Brass/ Gold-Flash /Gold Plated Options



**Ordering Information**

FFH 200 15 — D XX S X XX 4 K6 X  
 1 2 3 4 5 6 7 8 9 10 11

1 Category FFH—Female Header	2 Series Number 200—Pitch2.00mm	3 Distinction No. 15	4 Contact Alignment D—Double Row	5 Circuits XX
6 Entry Angle S—Vertical	7 Plating 1—Gold Flash 3—Half Gold/Tin	8 Thickness of Plating 00—Gold Flash 05—5u"; 15—15u" 30—30u" Custom Plate Available	9 Material—Resin 4—PA6T	10 Color—Resin K6—Black
				11 Packaging M—Reel K—Tray



Recommended P.C.Board Layout

Circuits (n)	Part No.	Dimensions(in/mm)		Circuits (n)	Part No.	Dimensions(in/mm)	
		A	B			A	B
4	FFH20015-D04SXXX4K6X	.079(2.00)	.177(4.50)	44	FFH20015-D44SXXX4K6X	1.654(42.00)	1.752(44.50)
6	FFH20015-D06SXXX4K6X	.157(4.00)	.256(6.50)	46	FFH20015-D46SXXX4K6X	1.732(44.00)	1.831(46.50)
8	FFH20015-D08SXXX4K6X	.236(6.00)	.335(8.50)	48	FFH20015-D48SXXX4K6X	1.811(46.00)	1.909(48.50)
10	FFH20015-D10SXXX4K6X	.315(8.00)	.413(10.50)	50	FFH20015-D50SXXX4K6X	1.890(48.00)	1.988(50.50)
12	FFH20015-D12SXXX4K6X	.394(10.00)	.492(12.50)	52	FFH20015-D52SXXX4K6X	1.969(50.00)	2.067(52.50)
14	FFH20015-D14SXXX4K6X	.472(12.00)	.571(14.50)	54	FFH20015-D54SXXX4K6X	2.047(52.00)	2.146(54.50)
16	FFH20015-D16SXXX4K6X	.551(14.00)	.650(16.50)	56	FFH20015-D56SXXX4K6X	2.126(54.00)	2.224(56.50)
18	FFH20015-D18SXXX4K6X	.630(16.00)	.728(18.50)	58	FFH20015-D58SXXX4K6X	2.205(56.00)	2.303(58.50)
20	FFH20015-D20SXXX4K6X	.709(18.00)	.807(20.50)	60	FFH20015-D60SXXX4K6X	2.283(58.00)	2.382(60.50)
22	FFH20015-D22SXXX4K6X	.787(20.00)	.886(22.50)	62	FFH20015-D62SXXX4K6X	2.362(60.00)	2.460(62.50)
24	FFH20015-D24SXXX4K6X	.866(22.00)	.965(24.50)	64	FFH20015-D64SXXX4K6X	2.441(62.00)	2.539(64.50)
26	FFH20015-D26SXXX4K6X	.845(24.00)	1.043(26.50)	66	FFH20015-D66SXXX4K6X	2.520(64.00)	2.618(66.50)
28	FFH20015-D28SXXX4K6X	1.024(26.00)	1.122(28.50)	68	FFH20015-D68SXXX4K6X	2.598(66.00)	2.697(68.50)
30	FFH20015-D30SXXX4K6X	1.102(28.00)	1.201(30.50)	70	FFH20015-D70SXXX4K6X	2.677(68.00)	2.776(70.50)
32	FFH20015-D32SXXX4K6X	1.181(30.00)	1.280(32.50)	72	FFH20015-D72SXXX4K6X	2.756(70.00)	2.854(72.50)
34	FFH20015-D34SXXX4K6X	1.260(32.00)	1.358(34.50)	74	FFH20015-D74SXXX4K6X	2.835(72.00)	2.933(74.50)
36	FFH20015-D36SXXX4K6X	1.339(34.00)	1.437(36.50)	76	FFH20015-D76SXXX4K6X	2.913(74.00)	3.012(76.50)
38	FFH20015-D38SXXX4K6X	1.417(36.00)	1.516(38.50)	78	FFH20015-D78SXXX4K6X	2.992(76.00)	3.091(78.50)
40	FFH20015-D40SXXX4K6X	1.496(38.00)	1.594(40.50)	80	FFH20015-D80SXXX4K6X	3.071(78.00)	3.169(80.50)
42	FFH20015-D42SXXX4K6X	1.575(40.00)	1.673(42.50)				

<p>THIRD ANGLE PROJECTION</p>	GENERAL TOLERANCES (UNLESS SPECIFIED)		APPROVE BY FRANK	DATE 23/JUL/13	PART NO. FFH20015-DXXSXXX4K6X	ITEM NO. FFH20015	<p>Leader Of Industry</p>
	X±.012(0.30)	X'±5'	CHECKED BY CHERRY	DATE 23/JUL/13	TITLE Female Header Pitch: .079'(2.00mm) Series		
	X.XX±.008(0.20)	.X'±2'	DRAWN BY JACOB	DATE 23/JUL/13	REV 0	SHEET NO. 1/1	
	X.XX±.006(0.15)	.XX'±1'	THIS DRAWING CONTAINS INFORMATION THAT IS PROPRIETARY TO TXGA INDUSTRIAL ELECTRONICS(S,Z)CO.,LTD AND SHOULD NOT BE USED WITHOUT WRITTEN PERMISSION				
SCALE 5:1	SIZE A4	X.XXX±.004(0.10)	.XXX'±0.5'				